

NEWBERRY CALDERA NORDIC TRAILS

121°20'3"W

121°18'49"W

121°17'36"W

121°16'22"W

121°15'9"W

Deschutes N.F.



Scan to download map for PDF Maps app
Newberry Caldera Nordic Trails 2.2 MB

The Forest Service cannot assure the reliability or suitability of this information for any particular purpose. Original data elements were compiled from various sources. Spatial information may not meet National Map Accuracy standards. This information may be updated, corrected, or otherwise modified without notification.
For additional information about this data, contact the Deschutes National Forest at 541-383-5300.

Newberry National
Volcanic Monument

Paulina Falls
Viewpoint

Paulina
Lake
Elev. 6331ft.

Caution: Not Recommended
for skiing. Thin Ice!

Paulina Lake Lodge

Paulina Nordic
Hill Loop

Paulina Nordic
Loop

Paulina Nordic
Loop

Paulina Peak
Elev. 7984 ft.

Paulina Creek

Ponderosa Rim Trail

Paulina View Trail

Hwy 97
10 mi.

Trail 11.1

Trail 11.2

Trail 1

10 Mile
Sno-Park
Elev. 5560 ft.

Paulina View Trail

AREA NOTICE



Newberry Area
Open to Dogs

CANINE COURTESY:

When visiting the area with a dog please:

- Keep your dog close to you and under reliable physical or voice control at all times. Dogs must be leashed when in the Sno-Park.
- Control dog's aggressive behavior towards other trail users.
- Remove dog excrement from trails, shelter areas and Sno-Parks.
- Report lost dogs to Deschutes County Animal Control and the Forest Service.

Map Legend

NEWBERRY CALDERA NORDIC TRAILS

- Nordic Ski Trails
- Snowmobile Trails
- Sno-Parks
- Warming Shelter
- Resort (Open in Winter)

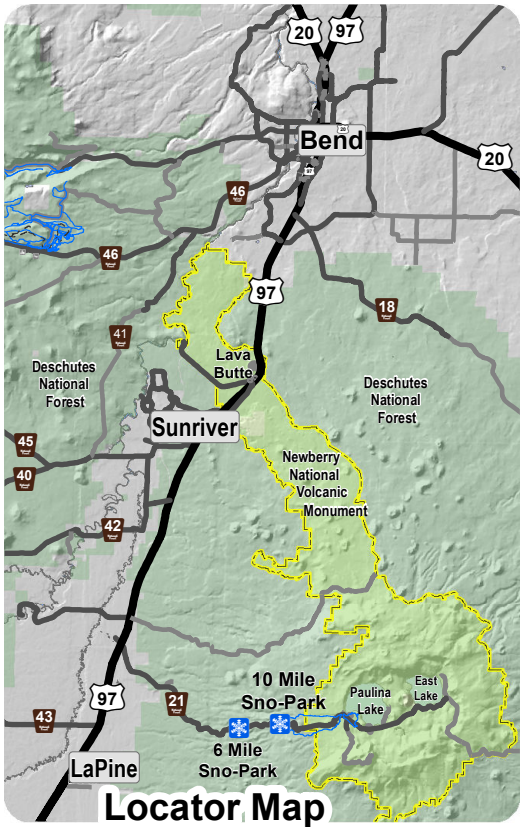


for the greatest good

0 0.25 0.5 1 Miles
(grid lines are one mile apart)

Map updated November 2015 SWH

SNOWSHOERS: If using designated ski trails
please be courteous to set ski tracks and walk
at least 2 feet to either side of set ski tracks.



Locator Map

121°20'3"W

121°18'49"W

121°17'36"W

121°16'22"W

121°15'9"W